

KHSAA Basketball - Game Box Score

Elizabethtown Lady Panthers vs. Boone County Lady Rebels

Date: 03/13/2009 Time: 6:30 pm CST Site: Diddle Arena-Bowling Green, KY Attendance: N

Visitors: Boone County Lady Rebels

##	Name	P	FG	3 Pt	FT	PTS	ORB	DRB	TR	PF	AST	TO	BS	ST	MIN
10	Ashley Smith		0/1	0/0	0/0	0	0	1	1	0	1	3	0	0	1:48
11	Kayla Robertson		0/0	0/0	0/0	0	0	0	0	0	0	1	0	1	1:29
12	* Jacy Bradley		1/2	3/8	0/0	11	1	2	3	2	7	6	0	1	27:03
14	Jackie Marschall		1/1	0/0	0/0	2	0	2	2	3	0	0	0	0	15:02
15	Olivia Fields		0/0	0/0	0/0	0	0	0	0	0	0	0	0	0	1:09
20	* Joscelyn Davis		0/2	0/0	5/6	5	1	2	3	3	0	0	0	0	23:16
23	Meagan Spicer		0/1	0/0	0/0	0	0	1	1	0	0	0	0	1	1:48
24	* Courtney Sellers		0/1	3/4	0/0	9	2	0	2	2	1	2	0	0	13:43
25	Stacie Shrout		0/0	1/3	0/0	3	0	1	1	1	1	0	0	0	9:13
30	Annie Browning		0/0	0/3	5/5	5	0	0	0	1	0	1	0	0	10:23
32	* Lauren Bowling		1/4	0/2	2/2	4	4	3	7	2	0	3	0	1	25:27
34	* Heather Sandlin		3/9	2/7	1/2	13	1	0	1	5	0	6	1	2	26:03
42	Lydia Nash		1/1	0/0	0/0	2	0	0	0	0	0	0	0	0	1:48
13	Ashleigh Conner		0/0	0/0	0/0	0	0	1	1	0	0	0	0	0	1:48
	Team						3	1	4						
	Totals		7/22	9/27	13/15	54	12	14	26	19	10	22	1	6	160
	2 PT FG		1st Half	2/10	20.0%	2nd Half	5/12	41.7%	Game	7/22	31.8%				
	3 PT FG		1st Half	1/13	7.69%	2nd Half	8/14	57.1%	Game	9/27	33.3%				
	Free Throws		1st Half	9/11	81.8%	2nd Half	4/4	100%	Game	13/15	86.7%				

Home: Elizabethtown Lady Panthers

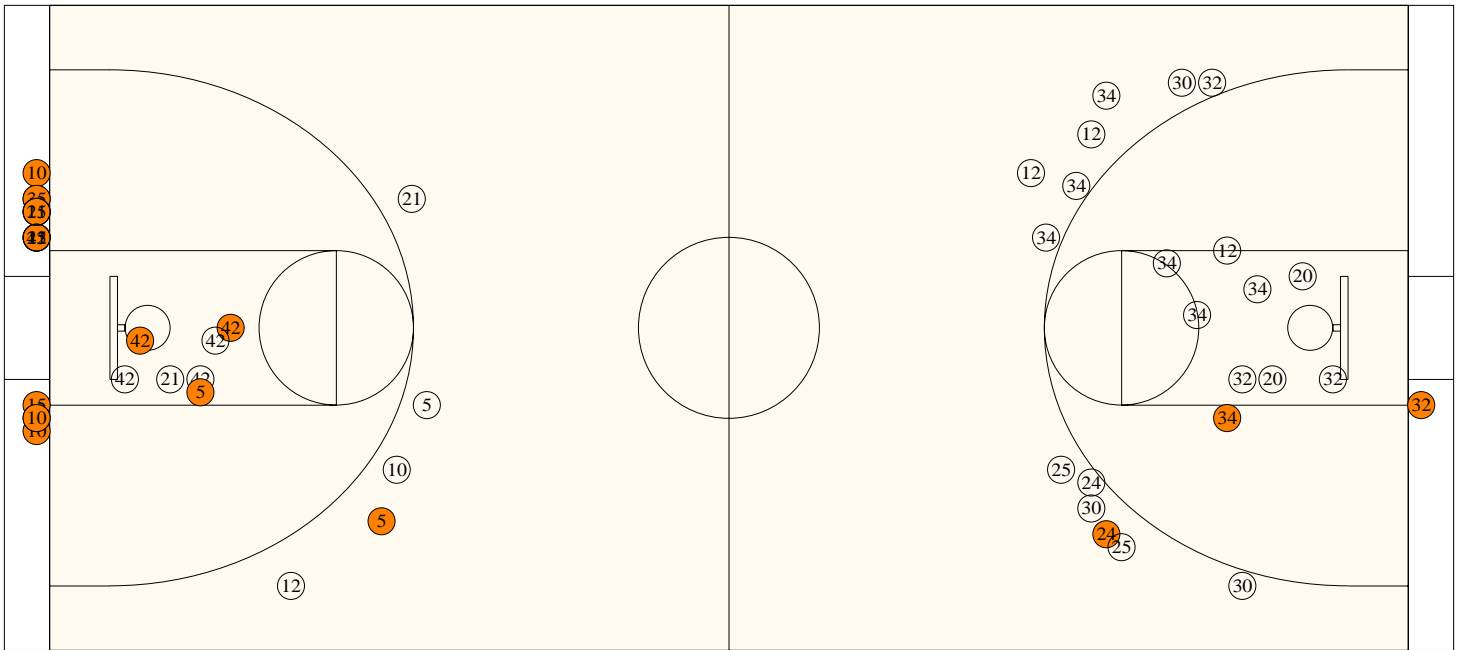
##	Name	P	FG	3 Pt	FT	PTS	ORB	DRB	TR	PF	AST	TO	BS	ST	MIN
3	Chelsea Kauffeld	G	0/1	0/0	0/0	0	0	0	0	0	0	1	0	0	5:00
5	* Dorian Downs	G	2/3	3/6	0/0	13	2	2	4	3	1	1	0	0	19:30
10	* Terra Lucas	G/F	5/5	0/1	4/4	14	0	2	2	2	1	1	0	1	17:08
12	Tara Gilpin	G	0/0	0/1	1/2	1	1	2	3	0	1	0	0	0	17:33
14	Hannah Hart	G	0/0	0/0	0/1	0	0	0	0	1	0	1	0	1	10:15
15	* Adelaide Luckett	F	4/5	0/0	2/3	10	2	5	7	1	5	2	0	2	22:06
21	* Natalie Greenwell	G	0/3	0/1	6/6	6	0	1	1	1	1	2	0	2	22:50
24	Kymber Berrow	F/C	0/2	0/0	0/0	0	0	1	1	1	0	3	0	1	4:13
25	Denisha Nichols	F/C	1/1	0/0	0/2	2	1	0	1	2	0	0	0	0	3:43
35	Jasmine Deaderick	F/C	4/7	0/0	1/2	9	1	2	3	2	0	0	0	0	10:42
42	* Alex Jones	C	5/9	0/0	4/5	14	4	3	7	1	4	6	2	1	22:47
50	Darian Ditto	C	0/0	0/0	1/2	1	0	2	2	0	0	1	0	1	4:13
	Team						0	0	0						
	Totals		21/36	3/9	19/27	70	11	20	31	14	13	18	2	9	160
	2 PT FG		1st Half	13/20	65.0%	2nd Half	8/16	50.0%	Game	21/36	58.3%				
	3 PT FG		1st Half	1/5	20.0%	2nd Half	2/4	50.0%	Game	3/9	33.3%				
	Free Throws		1st Half	9/10	90.0%	2nd Half	10/17	58.8%	Game	19/27	70.4%				

	BOONE	ELIZ		BOONE	ELIZ		BOONE	ELIZ
Free Throw Pts	13	19	3Pt Points	27	9	Pts/Possession	0.82	1.09
Pts off Turnovers	11	22	2nd Chance Points	6	15	Pts off Bench	12	13
Total Rebounds	26	31	Team Rebounds	4	0	Dead Ball Reb	3	4
Off Rebound %	37.5	44.0	Def Rebound %	56.0	62.5	Total Rebound %	45.6	54.4
3Pt Efficiency	+12.1	-5.6	Def. Stops	32	42	Pts/Shot	0.96	1.21
Technical Fouls	BOONE	None						
	ELIZ	None						
Officials	Sherianne Shuey, Jamie Gatewood, Will Jones							

	Qtr 1	Qtr 2	Qtr 3	Qtr 4	OT 1	OT 2	OT 3	OT 4	Total
Boone County Lady Rebels	8	8	16	22	0	0	0	0	54
Elizabethtown Lady Panthers	23	15	22	10	0	0	0	0	70

Largest Lead ELIZ 56 BOONE 23 (33 pts) **Lead Changes** 0 **Number of Ties** 0
Comments: None

FIRST HALF



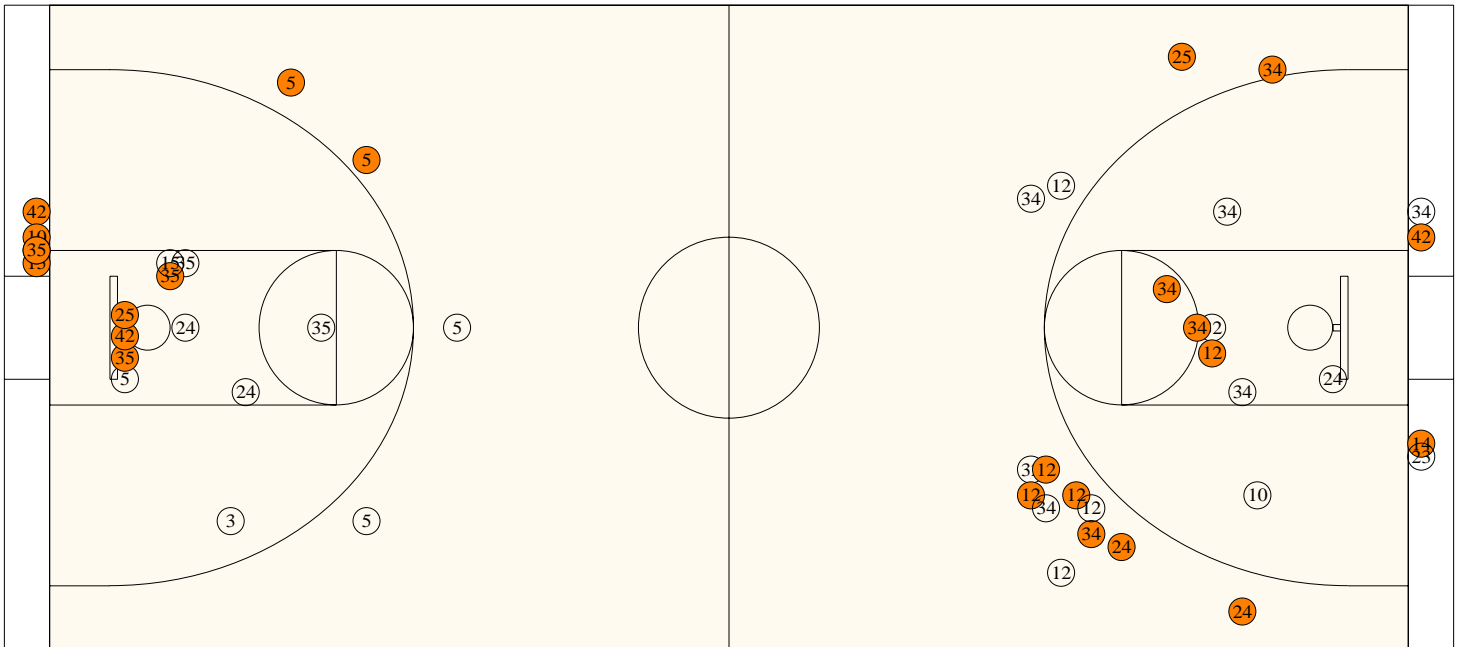
Elizabethtown

Shooting	Pts	Pts	Pts
2FG 13/20 (65.0%)	26	Pts/Shot	1.27
3FG 1/5 (20.0%)	3	2nd Eff Pts	5
TFG 14/25 (56.0%)		Pts off TO's	12
FT 9/10 (90.0%)	9	3Pt Eff	-23.3
Scoring Distribution: 2FG 68.4% 3FG 7.9% FT 23.7%			

Boone County

Shooting	Pts	Pts	Pts
2FG 2/10 (20.0%)	4	Pts/Shot	0.57
3FG 1/13 (7.69%)	3	2nd Eff Pts	3
TFG 3/23 (13.0%)		Pts off TO's	2
FT 9/11 (81.8%)	9	3Pt Eff	-5.6
Scoring Distribution: 2FG 25.0% 3FG 18.8% FT 56.3%			

SECOND HALF



Elizabethtown

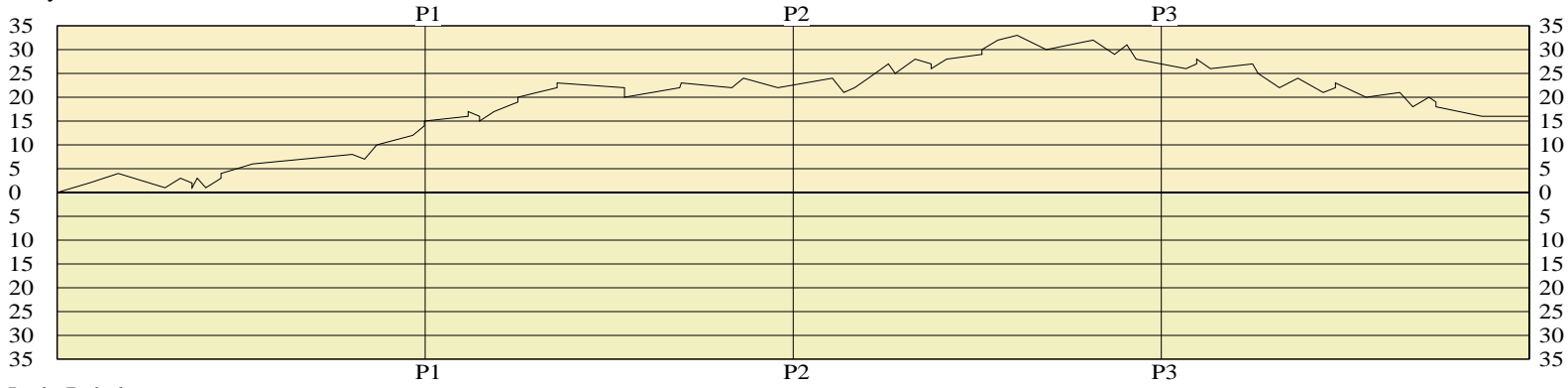
2FG 8/16 (50.0%)	16	Pts/Shot	1.14
3FG 2/4 (50.0%)	6	2nd Eff Pts	10
TFG 10/20 (50.0%)		Pts off TO's	10
FT 10/17 (58.8%)	10	3Pt Eff	+16.7
Scoring Distribution: 2FG 50.0% 3FG 18.8% FT 31.3%			

Boone County

2FG 5/12 (41.7%)	10	Pts/Shot	1.36
3FG 8/14 (57.1%)	24	2nd Eff Pts	3
TFG 13/26 (50.0%)		Pts off TO's	9
FT 4/4 (100%)	4	3Pt Eff	+29.4
Scoring Distribution: 2FG 26.3% 3FG 63.2% FT 10.5%			

Lady Panthers

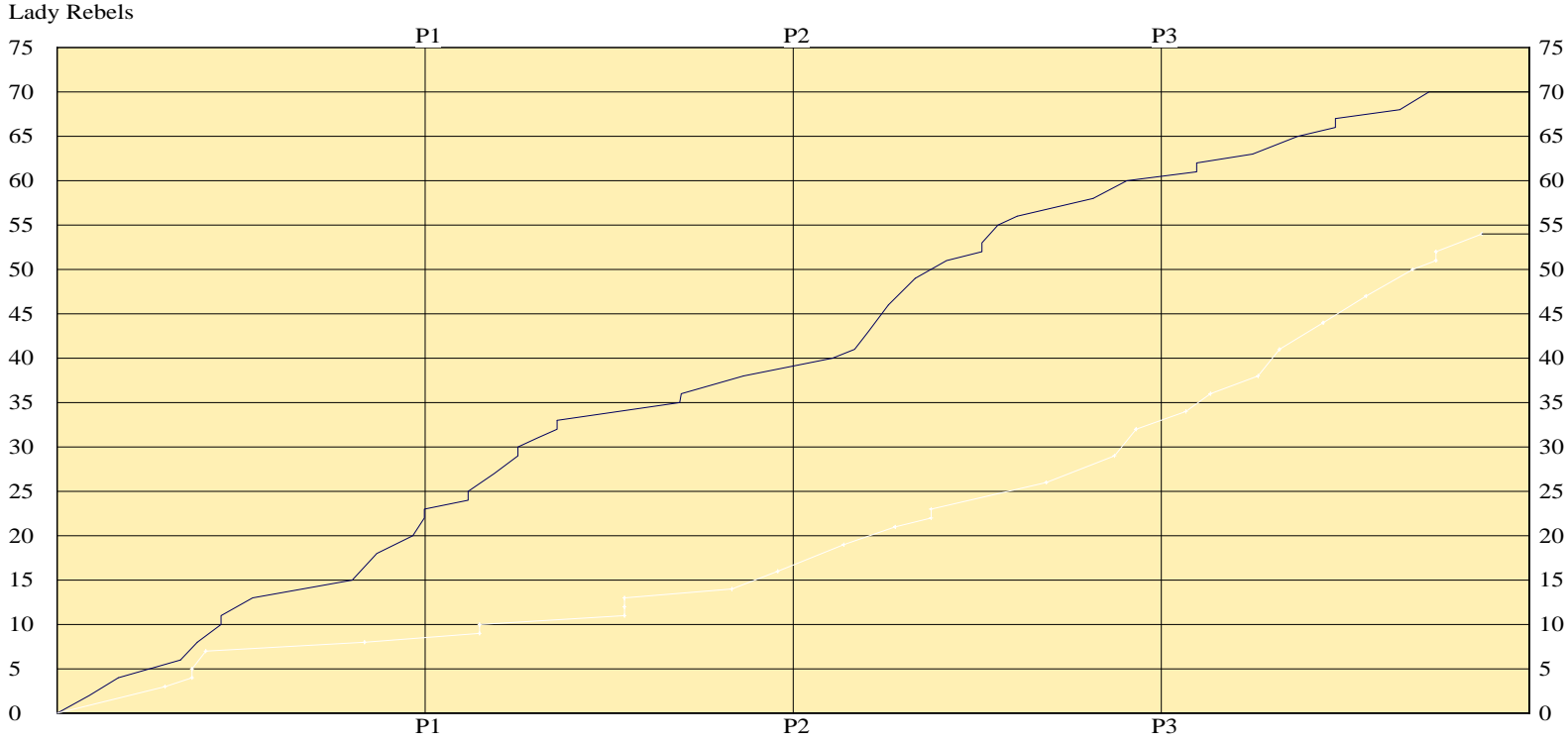
LEAD TIMELINE



Lady Rebels

Lady Panthers

SCORING TIMELINE



Largest Lead ELIZ 56 BOONE 23 (33 pts) Lead Changes 0 Number of Ties 0

KHSAA Basketball - Play by Play Report - Scoring Only (pg 1)

Elizabethtown Lady Panthers vs. Boone County Lady Rebels

Date: 03/13/2009 Time: 6:30 pm CST Site: Diddle Arena-Bowling Green, KY Attendance: N

Name	Action	Action	Score	Clock	Diff	Name	Action	Action
A Lockett	Layup Made	A Jones Assist	2-0	1 7:18	+2 (L1)			
A Jones	Layup Made		4-0	1 6:40	+4			
			4-3	1 5:39	+1	C Sellers	3Pt Made	J Bradley Assist
A Jones	FG Made	T Lucas Assist	6-3	1 5:19	+3			
A Lockett	Personal Foul		6-4	1 5:04	+2	J Davis	FT Made	
			6-5	1 5:04	+1	J Davis	FT Made	
D Downs	Layup Made		8-5	1 4:57	+3			
			8-7	1 4:46	+1	H Sandlin	FG Made	
T Lucas	Layup Made		10-7	1 4:26	+3			
T Lucas	FT Made		11-7	1 4:26	+4	C Sellers	Personal Foul	
T Lucas	Layup Made		13-7	1 3:45	+6			
J Deaderick	Layup Made	A Jones Assist	15-7	1 1:35	+8			
			15-8	1 1:19	+7	J Davis	FT Made	
D Downs	3Pt Made	A Lockett Assist	18-8	1 1:03	+10			
T Lucas	Layup Made	D Downs Assist	20-8	1 0:16	+12			
T Lucas	Layup Made	A Lockett Assist	22-8	1 0:01	+14			
T Lucas	FT Made		23-8	1 0:01	+15	A Browning	Personal Foul	

End of Period Summary Lady Panthers 23 Lady Rebels 8

Largest Lead: Lady Panthers 23 Lady Rebels 8 (15 pts)

Lead in Period: Lady Panthers 23 Lady Rebels 8 (15 pts)

Lead Changes: 1 Ties: 0

Lead Changes: 0 Ties: 0 (this period)

2 for 0 oppo pts

1 for 0 pts

10/13 for 76.9 %

2/2 for 100 %

Turnovers

2nd Chances

Field Goals

Free Throws

7 for 9 oppo pts

5 for 3 pts

2/9 for 22.2 %

3/4 for 75.0 %

N Greenwell	FT Made		24-8	2 7:04	+16	H Sandlin	Personal Foul	
N Greenwell	FT Made		25-8	2 7:04	+17			
D Downs	Personal Foul		25-9	2 6:49	+16	J Davis	FT Made	
			25-10	2 6:49	+15	J Davis	FT Made	
A Lockett	Layup Made	A Jones Assist	27-10	2 6:30	+17			
A Lockett	Layup Made	T Gilpin Assist	29-10	2 5:59	+19			
A Lockett	FT Made		30-10	2 5:59	+20			
A Jones	FT Made		31-10	2 5:34	+21			
N Greenwell	FT Made		32-10	2 5:08	+22	S Shrout	Personal Foul	
N Greenwell	FT Made		33-10	2 5:08	+23			
			33-11	2 3:40	+22	A Browning	FT Made	
			33-12	2 3:40	+21	A Browning	FT Made	
			33-13	2 3:40	+20	A Browning	FT Made	
A Jones	FG Made		35-13	2 2:28	+22			
A Jones	FT Made		36-13	2 2:26	+23			
			36-14	2 1:20	+22	H Sandlin	FT Made	
D Downs	FG Made		38-14	2 1:05	+24			
			38-16	2 0:20	+22	L Bowling	Layup Made	J Bradley Assist

End of Period Summary Lady Panthers 38 Lady Rebels 16

Largest Lead: Lady Panthers 38 Lady Rebels 14 (24 pts)

Lead in Period: Lady Panthers 38 Lady Rebels 14 (24 pts)

Lead Changes: 1 Ties: 0

Lead Changes: 0 Ties: 0 (this period)

3 for 2 oppo pts

3 for 5 pts

4/12 for 33.3 %

Turnovers

2nd Chances

Field Goals

3 for 3 oppo pts

4 for 0 pts

1/14 for 7.14 %

KHSAA Basketball - Play by Play Report - Scoring Only (pg 2)

Elizabethtown Lady Panthers vs. Boone County Lady Rebels

Date: 03/13/2009 Time: 6:30 pm CST Site: Diddle Arena-Bowling Green, KY Attendance: N

Name	Action	Action	Score	Clock	Diff	Name	Action	Action
	7/8 for 87.5 %			Free Throws			6/7 for 85.7 %	
A Lockett	Layup Made	N Greenwell Assist	40-16	3	7:09	+24		
			40-19	3	6:54	+21	H Sandlin	3Pt Made
A Lockett	FT Made		41-19	3	6:40	+22	L Bowling	Personal Foul
A Jones	Layup Made		43-19	3	6:22	+24		
D Downs	3Pt Made	A Jones Assist	46-19	3	5:56	+27		
			46-21	3	5:47	+25	J Marschall	Layup Made
D Downs	3Pt Made	A Lockett Assist	49-21	3	5:21	+28		J Bradley Assist
			49-22	3	5:00	+27	L Bowling	FT Made
			49-23	3	5:00	+26	L Bowling	FT Made
J Deaderick	FG Made		51-23	3	4:40	+28		
T Lucas	FT Made		52-23	3	3:54	+29	L Bowling	Personal Foul
T Lucas	FT Made		53-23	3	3:54	+30		
T Lucas	Layup Made	A Lockett Assist	55-23	3	3:33	+32		
J Deaderick	FT Made		56-23	3	3:08	+33	J Marschall	Personal Foul
			56-26	3	2:30	+30	S Shrout	3Pt Made
J Deaderick	Putback Made		58-26	3	1:29	+32		J Bradley Assist
			58-29	3	1:01	+29	J Bradley	3Pt Made
J Deaderick	Layup Made	A Lockett Assist	60-29	3	0:45	+31		S Shrout Assist
			60-32	3	0:33	+28	J Bradley	3Pt Made

End of Period Summary Lady Panthers 60 Lady Rebels 32

Largest Lead: Lady Panthers 56 Lady Rebels 23 (33 pts)

Lead in Period: Lady Panthers 56 Lady Rebels 23 (33 pts)

**4 for 2 oppo pts
4 for 4 pts
8/13 for 61.5 %
4/6 for 66.7 %**

**Turnovers
2nd Chances
Field Goals
Free Throws**

Lead Changes: 1 Ties: 0

Lead Changes: 0 Ties: 0 (this period)

**6 for 10 oppo pts
0 for 0 pts
5/9 for 55.6 %
2/2 for 100 %**

N Greenwell	FT Made		60-34	4	7:28	+26	J Bradley	FG Made
N Greenwell	FT Made		61-34	4	7:14	+27	H Sandlin	Personal Foul
			62-34	4	7:14	+28		
			62-36	4	6:56	+26	H Sandlin	FG Made
T Gilpin	FT Made		63-36	4	6:01	+27		
			63-38	4	5:54	+25	H Sandlin	FG Made
			63-41	4	5:26	+22	H Sandlin	3Pt Made
A Jones	Putback Made		65-41	4	5:02	+24		J Bradley Assist
			65-44	4	4:29	+21	J Bradley	3Pt Made
A Jones	FT Made		66-44	4	4:13	+22		C Sellers Assist
A Jones	FT Made		67-44	4	4:13	+23		
			67-47	4	3:33	+20	C Sellers	3Pt Made
D Ditto	FT Made		68-47	4	2:49	+21		J Bradley Assist
			68-50	4	2:32	+18	C Sellers	3Pt Made
D Nichols	Putback Made		70-50	4	2:11	+20		J Bradley Assist
D Nichols	Personal Foul		70-51	4	2:02	+19	A Browning	FT Made
			70-52	4	2:02	+18	A Browning	FT Made
			70-54	4	1:02	+16	L Nash	Layup Made
								A Smith Assist

End of Period Summary Lady Panthers 70 Lady Rebels 54

Largest Lead: Lady Panthers 56 Lady Rebels 23 (33 pts)

Lead in Period: Lady Panthers 60 Lady Rebels 32 (28 pts)

Lead Changes: 1 Ties: 0

Lead Changes: 0 Ties: 0 (this period)

OFFICIAL BASKETBALL BOX SCORE
Boone County Lady Rebels vs Elizabethtown Lady Panthers

03/13/2009 6:30 pm CST
Final Box Score

Diddle Arena
Bowling Green, KY

No.	Boone County Lady Rebels	Total FG		3-point		Free throw		Rebounds			F	TP	A	TO	BLK	STL	MIN		
		FG	FGA	FG	FGA	FT	FTA	Off	Def	Tot									
10	Ashley Smith	0	1	0	0	0	0	0	1	1	0	0	1	3	0	0	1:48		
11	Kayla Robertson	0	0	0	0	0	0	0	0	0	0	0	0	1	0	1	1:29		
12	Jacy Bradley	4	10	3	8	0	0	1	2	3	2	11	7	6	0	1	27:03		
14	Jackie Marschall	1	1	0	0	0	0	0	2	2	3	2	0	0	0	0	15:02		
15	Olivia Fields	0	0	0	0	0	0	0	0	0	0	0	0	0	0	0	1:09		
34	Heather Sandlin	5	16	2	7	1	2	1	0	1	5	13	0	6	1	2	26:03		
32	Lauren Bowling	1	6	0	2	2	2	4	3	7	2	4	0	3	0	1	25:27		
20	Joscelyn Davis	0	2	0	0	5	6	1	2	3	3	5	0	0	0	0	23:16		
24	Courtney Sellers	3	5	3	4	0	0	2	0	2	2	9	1	2	0	0	13:43		
30	Annie Browning	0	3	0	3	5	5	0	0	0	1	5	0	1	0	0	10:23		
25	Stacie Shrout	1	3	1	3	0	0	0	1	1	1	3	1	0	0	0	9:13		
23	Meagan Spicer	0	1	0	0	0	0	0	1	1	0	0	0	0	0	1	1:48		
42	Lydia Nash	1	1	0	0	0	0	0	0	0	0	2	0	0	0	0	1:48		
13	Ashleigh Conner	0	0	0	0	0	0	0	1	1	0	0	0	0	0	0	1:48		
Team (Included in Totals)								3	1	4									
Totals		16	49	9	27	13	15	12	14	26	19	54	10	22	1	6	160		
Total FG%: 1st half 3 - 23 (13.0%) 2nd half 13 - 26 (50.0%) Game 16 - 49 (32.7%) Deadball																			
3Pt FG%: 1st half 1 - 13 (7.69%) 2nd half 8 - 14 (57.1%) Game 9 - 27 (33.3%) rebounds																			
FT%: 1st half 9 - 11 (81.8%) 2nd half 4 - 4 (100%) Game 13 - 15 (86.7%) 3																			

No.	Elizabethtown Lady Panthers	Total FG		3-point		Free throw		Rebounds			F	TP	A	TO	BLK	STL	MIN		
		FG	FGA	FG	FGA	FT	FTA	Off	Def	Tot									
10	Terra Lucas (G/F)	5	6	0	1	4	4	0	2	2	2	14	1	1	0	1	17:08		
15	Adelaide Luckett (F)	4	5	0	0	2	3	2	5	7	1	10	5	2	0	2	22:06		
42	Alex Jones (C)	5	9	0	0	4	5	4	3	7	1	14	4	6	2	1	22:47		
5	Dorian Downs (G)	5	9	3	6	0	0	2	2	4	3	13	1	1	0	0	19:30		
21	Natalie Greenwell (G)	0	4	0	1	6	6	0	1	1	1	6	1	2	0	2	22:50		
12	Tara Gilpin (G)	0	1	0	1	1	2	1	2	3	0	1	1	0	0	0	17:33		
35	Jasmine Deaderick (F/C)	4	7	0	0	1	2	1	2	3	2	9	0	0	0	0	10:42		
14	Hannah Hart (G)	0	0	0	0	0	1	0	0	0	1	0	0	1	0	1	10:15		
3	Chelsea Kauffeld (G)	0	1	0	0	0	0	0	0	0	0	0	0	1	0	0	5:00		
24	KyMBER Berrow (F/C)	0	2	0	0	0	0	0	1	1	1	0	0	3	0	1	4:13		
50	Darian Ditto (C)	0	0	0	0	1	2	0	2	2	0	1	0	1	0	1	4:13		
25	Denisha Nichols (F/C)	1	1	0	0	0	2	1	0	1	2	2	0	0	0	0	3:43		
Team (Included in Totals)								0	0	0									
Totals		24	45	3	9	19	27	11	20	31	14	70	13	18	2	9	160		
Total FG%: 1st half 14 - 25 (56.0%) 2nd half 10 - 20 (50.0%) Game 24 - 45 (53.3%) Deadball																			
3Pt FG%: 1st half 1 - 5 (20.0%) 2nd half 2 - 4 (50.0%) Game 3 - 9 (33.3%) rebounds																			
FT%: 1st half 9 - 10 (90.0%) 2nd half 10 - 17 (58.8%) Game 19 - 27 (70.4%) 4																			

Technical Fouls: None

Attendance: N

Officials: Sherianne Shuey, Jamie Gatewood, Will Jones

Score by Period	1st	2nd	3rd	4th	Final	Record	Overall	Conf
Boone County Lady Rebels	8	8	16	22	54	Lady Rebels		
Elizabethtown Lady Panthers	23	15	22	10	70	Lady Panthers		

	Lady Panthers	Lady Rebels		Lady Panthers	Lady Rebels		Lady Panthers	Lady Rebels
Points off Turnovers	22	11	Second Effort Points	15	6	Bench Points	13	12
Points in the Paint	40	10	3 Point Points	9	27	Free Throw Points	19	13
3pt Efficiency	-5.6	+12.1	Points/Shot	1.21	0.96	Defensive Stops	42	32
Largest Lead	56	23 (33 pts)	Lead Changes	0		Number of Ties	0	

Game comments: None